

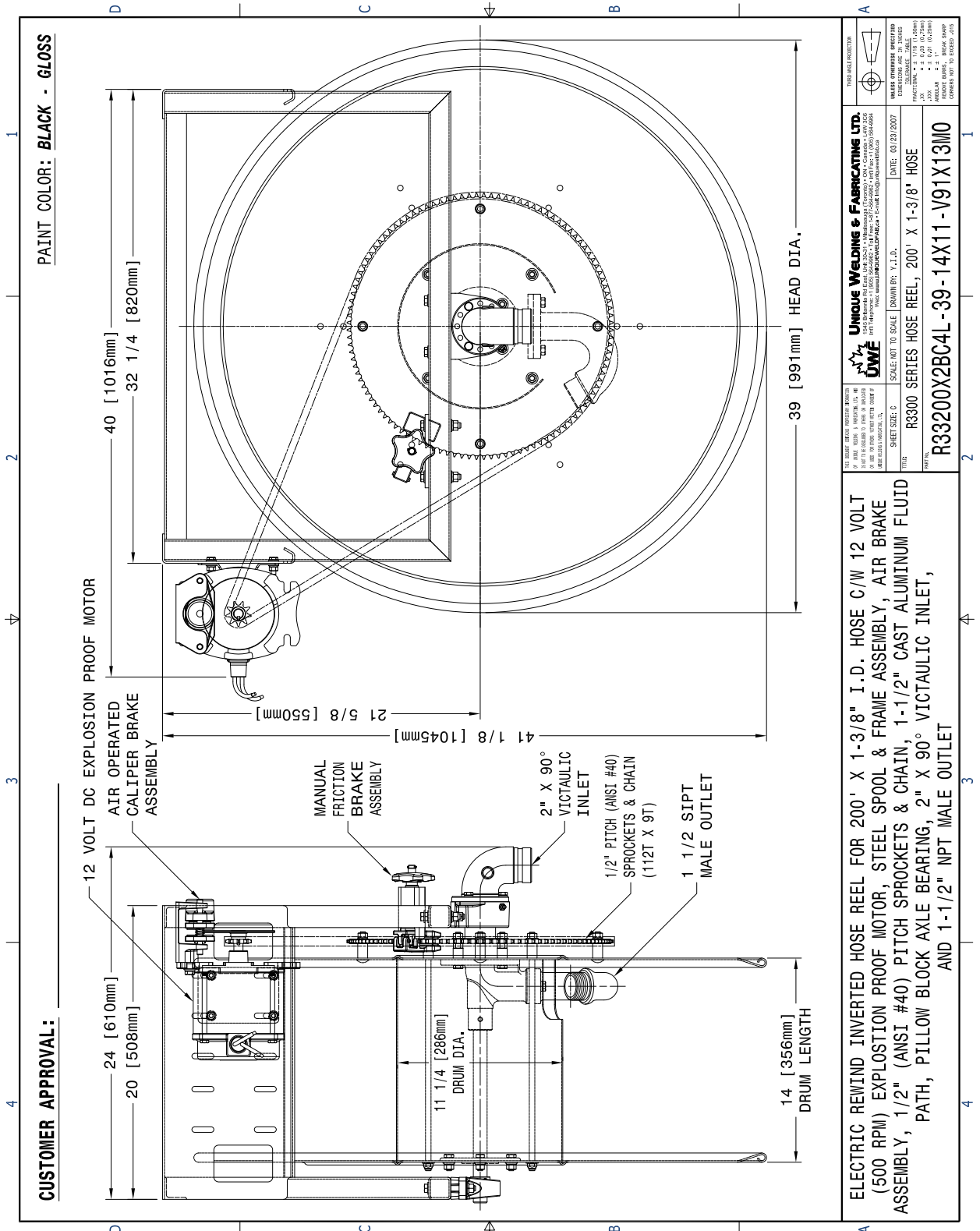


Reel it in with!  
**UNIQUE**

POWER REWIND REEL, 1 3/8" I.D. X 200' HOSE

**1 1/2", 2"**  
FLUID PATH  
**R33 SERIES**

**R33200X2BC4L-39-14X11-V91X13M0**



**ELECTRIC REWIND INVERTED HOSE REEL FOR 200' X 1-3/8" I.D. HOSE C/W 12 VOLT (500 RPM) EXPLOSION PROOF MOTOR, STEEL SPOOL & FRAME ASSEMBLY, AIR BRAKE ASSEMBLY, 1/2" (ANSI #40) PITCH SPROCKETS & CHAIN, 1-1/2" CAST ALUMINUM FLUID PATH, PILLOW BLOCK AXLE BEARING, 2" X 90° VICTAULIC INLET, AND 1-1/2" NPT MALE OUTLET**

**1 1/2", 2"**

FLUID PATH

**R33 SERIES***Reel it in with!***UNIQUE**

POWER REWIND REEL, 1 3/8" I.D. X 200' HOSE

**R33200X2BC4L-39-14X11-V91X13M0**PARTS LIST

ITEM	DESCRIPTION	QTY	PART NUMBER
Ø	PAINT, POWDER COAT	1	PAINT
1A	HEAD, 39"OD X 11.25" DRUM OD X 2.50"ID X #14GA [STEEL]	1	R2Ø1HED-31X2.5X11
1B	HEAD, 39"OD X 11.25" DRUM OD X Ø.94"ID X #14GA [ASS'Y]	1	R299HDA-31XØ.94X11
2	DRUM, 14"LG X 11.25" DRUM OD X #14GA [STEEL]	1	R2Ø1DRM-14X11
4	TIE ROD, THREADED 3/8"-16UNC X 16.5Ø"LG (14" DRUM) [PLATED]	4	R2Ø8TRDØ38X16.5Ø
5	SPINDLE DRUM SHAFT, Ø.94"OD X 13.25"LG (14" DRUM) [STEEL]	1	R22ØSFTØ94X13.25
6	SPINDLE, 1-1/2" (ELECTRIC, LONG NEW BALL BEARING STYLE) [ALUMINUM]	1	R6ØØCOM353
7	SEAL, O-RING - 1 3/4" ID X 2" OD (BUNA-N)	1	S8Ø2RSØ224
8	GOOSENECK, 1-1/2"SIPT MALE X 11.25" DRUM (1-1/2" F.P.) [ALUMINUM]	1	R6ØØCOMØ81
14	PIN, SLOTTED SPRING - 1/4" X 1 3/4" [PLAIN FINISH]	1	F-PSPØ28
15K	SPACER, SPROCKET - 3/8" PIPE SCH#4Ø X 11/16"LG (R33) [STEEL]	4	R2Ø4SPCØØ6
15P	SPACER, SPROCKET - 3/8" PIPE SCH#4Ø X 1"LG (R33) [STEEL]	8	R2Ø4SPCØØ8
16	SPROCKET, 112T X 2-1/2" BORE - 1/2" PITCH #4Ø, TYPE A [STEEL]	1	R2ØØSPK112X2.5Ø
18	INLET ADAPTER, 2" X 9Ø° VICTAULIC (1-1/2" F.P.) [ALUMINUM]	1	R6ØØCOM392
2Ø	BEARING, SPINDLE HOUSING - 1-1/2" (NEW BALL BEARING STYLE) [ASS'Y]	1	RØØØCMA151
21	RETAINER SEAL BACK SUPPORT, 1-1/2" F.P. [ALUMINUM]	1	R611COM653
22	RETAINING RING, EXTERNAL - 1.969 SHAFT [PLAIN FINISH]	1	P-N14ØØ-196
23	SEAL & RING ASSEMBLY, 1-1/2" FLUID PATH [FLUOROSILICONE - RED]	1	R851SEAØ8Ø
25	BEARING, BALL - 15/16" ID PILLOW BLOCK HEAVY DUTY (SELF ALIGNING)	1	R299BGLØ12
3Ø	FRAME ASSEMBLY, 32"W X 19.5"H X 2ØL (C/W MOTOR TIE PLATE) [STEEL]	1	R2Ø1FTR-32X19.5X2Ø
37	SPACER, BEARING - 9/16" HEIGHT X 5 5/8" LONG [ALUMINUM]	1	R6ØØSPCØ56
38	SCREW, RND HEAD SOC DRV TAPPING - #6 X 1/4" TYPE B [PLATED]	2	F-SPE1BØØ4Z
39	UNIQUE NAME PLATE [STAINLESS STEEL]	1	R3Ø4LABØØ1
4Ø	SPROCKET & BRAKE DISC, 9T X ANSI #4Ø X 5/8"ID (R33) [ASS'Y]	1	R2ØØCMA4Ø9
43	CHAIN, ANSI #4Ø (1/2" PITCH) X 86"LG. (C/W LINKS) [ASS'Y]	1	R2ØØCHAØ4ØX86
5Ø	MOTOR, EX-PROOF ELECTRIC - 12V, 2/3HP, 5ØØRPM, FACE & BASE MOUNT	1	RØØØMCPØ71
54	BRAKE, PNEUMATIC OPERATED CALIPER [ASS'Y]	1	RØØØCMA417
55	BRAKE, MANUAL FRICTION [ASS'Y]	1	RØØØCMA421
63C	SCREW, CAP HEX HEAD - 5/16"-18UNC X 3/4" [PLATED]	3	F-5CQØ12Z
65H	SCREW, CARRIAGE SQR NECK - 5/16"-18UNC X 1-3/4" FULL THREAD [PLATED]	4	F-C1QØ28C2FT
67F	SCREW, CAP HEX HEAD - 3/8"-16UNC X 1-1/4" [PLATED]	6	F-5CRØ2ØZ
67I	SCREW, CAP HEX HEAD - 3/8"-16UNC X 2" [PLATED]	6	F-5CRØ32Z
67K	SCREW, CAP HEX HEAD - 3/8"-16UNC X 2-1/2" [PLATED]	4	F-5CRØ4ØZ
67Ø	SCREW, CAP HEX HEAD - 3/8"-16UNC X 3-1/2" [PLATED]	2	F-5CRØ56Z
73A	NUT, HEX - 5/16"-18UNC [PLATED]	4	F-NH5CQZ
77A	NUT, HEX - 3/8"-16UNC [PLATED]	22	F-NH5CRZ
77E	NUT, HEX - 3/8"-16UNC PREVAILING LOCK (STOVER) [PLATED]	4	F-NLSCRZ
87A	WASHER, 3/8" PLAIN (USS) - 7/16" ID X 1" OD TYPE A [PLATED]	28	F-WURZ
83A	WASHER, LOCK - 5/16" [PLATED]	7	F-WLQZ
97A	WASHER, LOCK - 3/8" [PLATED]	16	F-WLRZ





Reel it in with!  
**UNIQUE**

POWER REWIND REEL, 1 3/8" I.D. X 200' HOSE

**1 1/2", 2"**  
FLUID PATH  
**R33 SERIES**

**R33200X2BC4L-39-14X11-V91X13M0**

PARTS LIST

